



**Sparkle Power Inc.**  
A Leading Power Supply Manufacturer  
Web site: [www.sparklepower.com](http://www.sparklepower.com)

## SUPER400 (SP400PN)

**(RoHS Compliant)**

**400 Watts ATX12V 2.2 Switching Power Supply**

### Features

- Complied with ATX12V standard
- High efficiency and reliability
- Remote ON/OFF function
- Internal 12V DC fan included
- Super quiet with 12cm big Fan
- Low noise and ripple
- Output over voltage, short circuit, and over current protection
- 100% Hi-pot, ATE, and burn-in tested
- Re-settable power shut down
- Complies with FCC part 15 subpart B/Sep.2005
- Approved by UL/CUL 60950-1, FCC

### Input Characteristics

**Input Range:** 115 ~ 230Vac (RMS), manual selection

**Frequency:** 47 ~ 63Hz

**Input Current:** Max 8.5A (RMS) @ 115Vac, 5A (RMS) @ 230Vac

**Inrush Current:** No damage.

### Output Characteristics

Output Voltage	Minimum Load	Normal Load	Maximum Load	Load Reg.	Line Reg.	Ripple & Noise
+3.3V	0.5A	10.0A	28.0A	± 5%	± 1%	50mV P-P
+5V	0.3A	7.0A	30.0A	± 5%	± 1%	50mV P-P
+12V1	1.0A	7.0A	18.0A	± 5%	± 1%	120mV P-P
+12V2	1.0A	8.5A	18.0A	± 5%	± 1%	120mV P-P
-12V	0.0A	0.4A	0.5A	± 10%	± 2%	120mV P-P
+5Vsb	0.0A	1.25A	2.5A	± 5%	± 1%	50mV P-P

\*+3.3V and +5V total output not exceed 180W

\*+3.3V and +5V and +12V1 +12V2 total output not exceed 385W.

\* Total output for this subject power supply is 400W

**Sparkle Power Inc.**  
**Main Office**  
1000 Rock Avenue  
San Jose, CA 95131  
TEL: 408-519-8888  
FAX: 408-519-9999  
E-MAIL: [info@sparklepower.com](mailto:info@sparklepower.com)

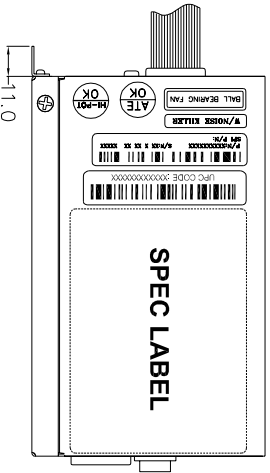
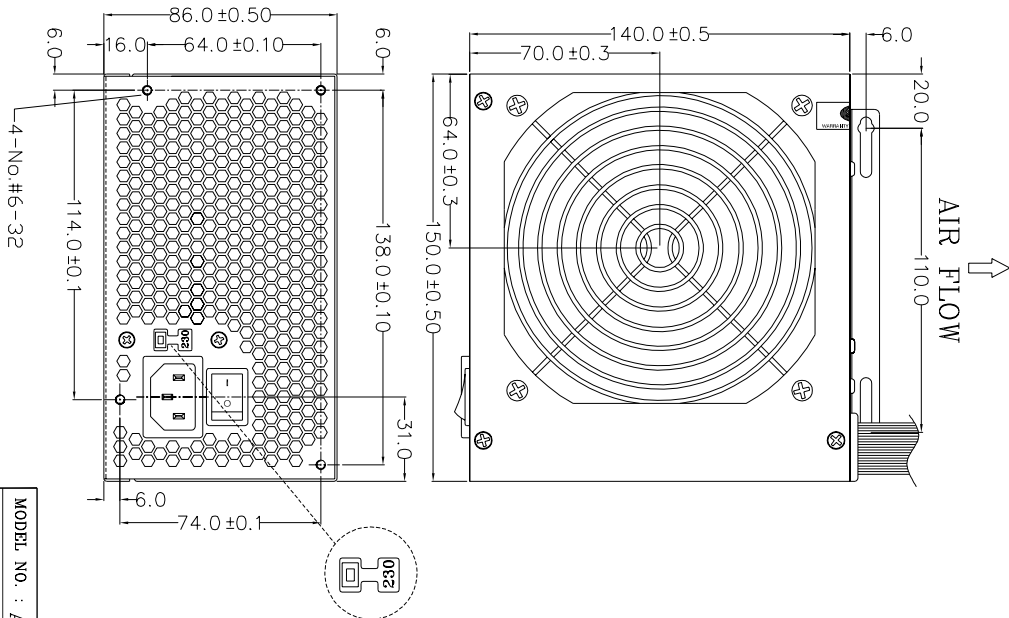
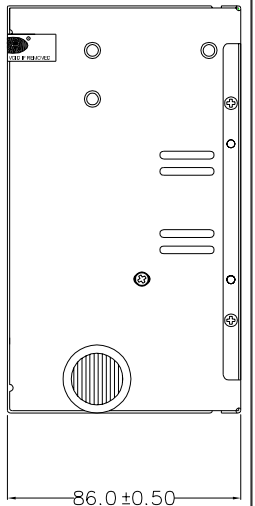
**Sparkle Power Inc.**  
**Los Angeles Office**  
17071 Green Drive  
City of Industry, CA 91745  
TEL: 626-839-7180  
FAX: 626-839-3395



### Specification

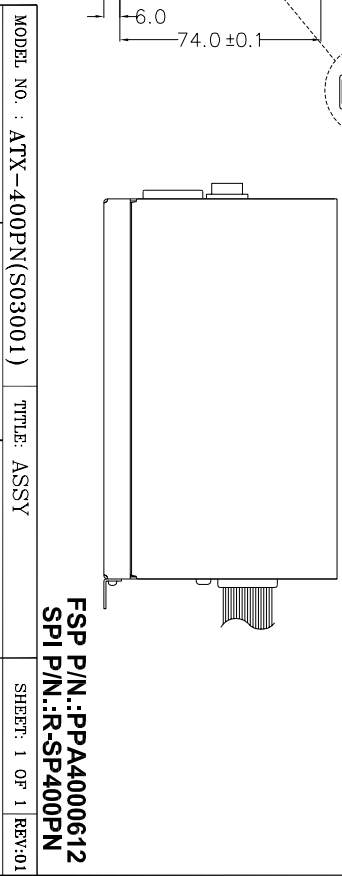
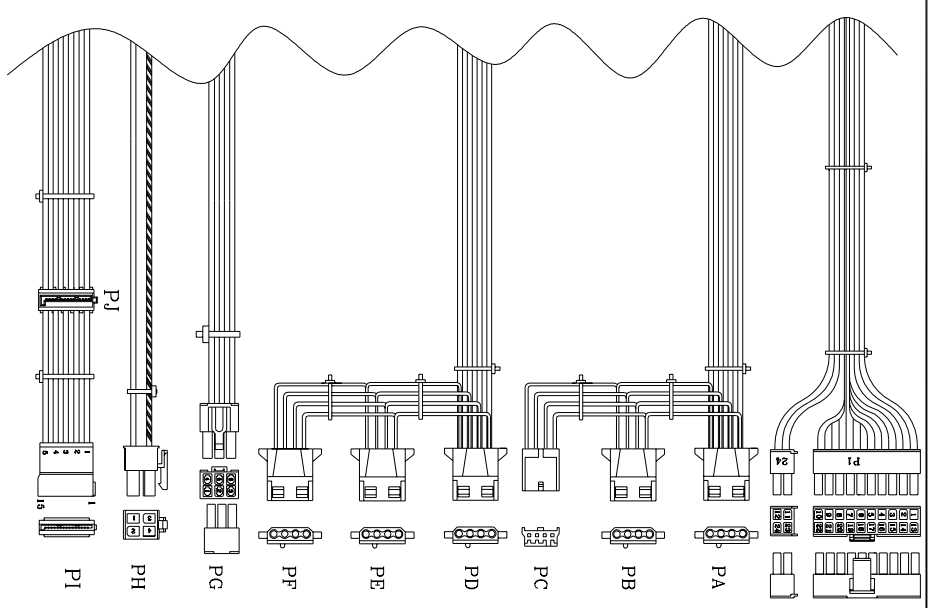
- **Temperature Range:** Operating: 0°C ~ +50°C ,Full load at 25°C ; De-rate 2W/°C from 25°C to 50 °C ,storage & shipping: -20°C ~ +65°C
- **Humidity:** 90% on operating,95% on storage
- **Dielectric Withstand:** Primary frame ground 1800V AC for 1 second
- **Efficiency:** 70% at minimum measured at nominal AC main voltage and frequency with maximum load on all output
- **Rise time:** Less than 20ms
- **Hold-up Time:** 17ms minimum at nominal input voltage
- **Power Good Signal:** Power on delay time 100 ~ 500ms, off delay 1ms minimum (TTL and CMOS compatible)
- **Leakage Current:** Less than 3.5mA.
- **MTBF:** 100,000 hours on maximum load at +25°C
- **Dimensions (LxWxH):** 140x150x86mm / 5.5x6x3.4inch

REF. NO.	WIRE SIGNAL	WIRE COLOR	CONNECTION	CABLE LENGTH
P1	1 +3.3VDC	ORANGE	18	4x38mm-400-30mm
	2 +3.3VDC	BLACK	18	4x38mm-400-30mm
	3 COM	BLACK	18	4x38mm-400-30mm
	4 +5VDC	RED	18	4x38mm-400-30mm
P1/24	5 +5VDC	BLACK	18	4x38mm-400-30mm
	6 COM	BLACK	18	4x38mm-400-30mm
	7 COM	BLACK	18	4x38mm-400-30mm
	8 PW-OK	GRAY	24	4x38mm-400-30mm
P1	9 +5Vdc	PURPLE	18	4x38mm-400-30mm
	10 +12Vt	YELLOW	18	4x38mm-400-30mm
	11 +12Vt	YELLOW	18	4x38mm-400-30mm
	12 +12Vt	ORANGE	18	4x38mm-400-30mm
P1	13 +3.3VDC	ORANGE	20	4x38mm-400-30mm
	14 +12VDC	BROWN	24	4x38mm-400-30mm
	15 COM	BLACK	18	4x38mm-400-30mm
	16 COM	BLACK	18	4x38mm-400-30mm
P1	17 RES-ON	GREEN	24	4x38mm-400-30mm
	18 COM	BLACK	18	4x38mm-400-30mm
	19 COM	BLACK	18	4x38mm-400-30mm
	20 COM	BLACK	18	4x38mm-400-30mm
P1	21 +5VDC	RED	18	4x38mm-400-30mm
	22 +5VDC	RED	18	4x38mm-400-30mm
	23 +5VDC	RED	18	4x38mm-400-30mm
	24 COM	YELLOW	18	4x38mm-400-30mm
PA	1 +12Vt	YELLOW	18	AMP
	2 COM	BLACK	18	1-48043-4-390-30mm or BQV.
	3 COM	YELLOW	18	AMP
	4 +12Vt	YELLOW	18	AMP
PB	1 +12Vt	BLACK	18	1-48043-4-155-10mm or BQV.
	2 COM	BLACK	18	AMP
	3 COM	BLACK	18	AMP
	4 +5Vt	RED	22	155-10mm or BQV.
PC	1 +12Vt	YELLOW	20	AMP
	2 COM	BLACK	22	171822-4 or BQV.
	3 COM	BLACK	22	AMP
	4 +5Vt	RED	22	AMP
PD	1 +12Vt	YELLOW	20	AMP
	2 COM	BLACK	20	1-48043-4-100-30mm or BQV.
	3 COM	BLACK	20	AMP
	4 +5Vt	RED	20	AMP
PE	1 +12Vt	YELLOW	20	AMP
	2 COM	BLACK	20	1-48043-4-150-10mm or BQV.
	3 COM	BLACK	20	AMP
	4 +5Vt	RED	20	AMP
PF	1 +12Vt	YELLOW	20	AMP
	2 COM	BLACK	20	1-48043-4-150-10mm or BQV.
	3 COM	BLACK	20	AMP
	4 +5Vt	RED	20	AMP
PG	1 +12Vt	YELLOW	18	C4302100
	2 +12Vt	YELLOW	18	-250PA
	3 +12Vt	BLACK	18	-RP
	4 COM	BLACK	18	or BQV.
PH	1 COM	BLACK	18	MOLEX
	2 COM	BLACK	18	38-01-3040-390-30mm or BQV.
	3 +12Vt	YELLOW	18	MOLEX
	4 +12Vt	YELLOW	18	50-07662-00-200-10mm or BQV.
PI	1 COM	BLACK	18	MOLEX
	2 COM	BLACK	18	38-01-3040-390-30mm or BQV.
	3 +5VDC	ORANGE	18	MOLEX
	4 COM	BLACK	18	38-07662-00-390-30mm or BQV.
PJ	1 COM	BLACK	18	MOLEX
	2 COM	BLACK	18	38-07662-00-390-30mm or BQV.
	3 +5VDC	ORANGE	18	MOLEX
	4 COM	ORANGE	18	38-07662-00-390-30mm or BQV.



NOTE:  
 1. ALL THE LENGTH OF OUTPUT WIRES EXCLUDE HOUSING.  
 2. 產地標籤依業務指示加貼.

UNIT:mm



FSP P/N.:PPA4000612  
 SPI P/N.:R-SP400PN

MODEL NO. : ATX-400PN(S03001)	TITLE: ASSY	SHEET: 1 OF 1	REV:01
R.D.( )	PE	DRAWN	DATE
			MAR.13.2007

Mechanical Drawing(外觀/機構圖)表單編號7000P-0111