



Sparkle Power Inc.
 A Leading Power Supply Manufacturer
 Web site: www.sparklepower.com

**FSP200-50PLA (Active PFC & RoHS Compliant)
 200 Watts Flex ATX12V Switching Power Supply**

Features

- Complied with Flex ATX and ATX12V standard
- Active Power Factor Correction (PFC) meet EN61000-3-2
- High efficiency and reliability
- Remote ON/OFF function
- Internal 12V DC fan included
- Noise Killer (thermal fan speed control function)
- Low noise and ripple
- Complies with FCC part 15 subpart J class B 115Vac operation, and CISPR 22 class B at 230Vac operation
- Output over voltage, short circuit, and over current protection
- 100% Hi-pot, ATE, and burn-in tested
- Re-settable power shut down
- Approved by UL60950, CSA C22.2 NO. 60950, TUV EN60950 or VDE EN60950, NEMKO EN60950 (CB Report), CE

Input Characteristics

Input Range: 90 ~ 265Vac (RMS), Full Range Input

Frequency: 47 ~ 63Hz

Input Current: 4A (RMS) @115Vac, 2A (RMS) @230Vac

Inrush Current: 50A Max @115Vac, 80A Max @230Vac cold

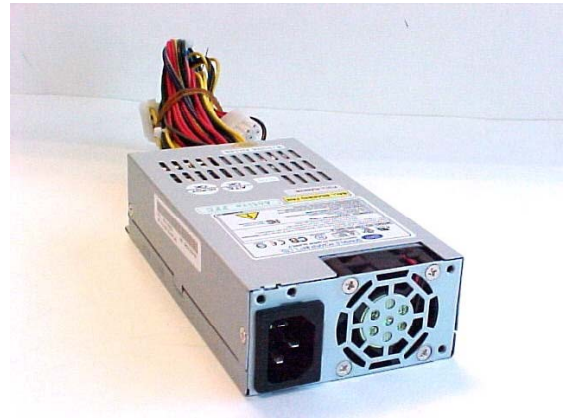
start

Output Characteristics

Output Voltage	Minimum Load	Maximum Load	Peak	Load Reg.	Line Reg.	Ripple & Noise
+3.3V	0.3A	16A		± 5%	± 1%	50mV P-P
+5V	0.3A	12A		± 5%	± 1%	50mV P-P
+12V	1.5A	12A	13A	± 5%	± 1%	120mV P-P
-12V	0.0A	0.8A		± 10%	± 2%	120mV P-P
+5Vsb	0.0A	2.0A		± 5%	± 1%	50mV P-P

*+5V and +3.3V total output not exceed 61W

*+3.3V, +5V, and +12V total output cannot exceed 180W



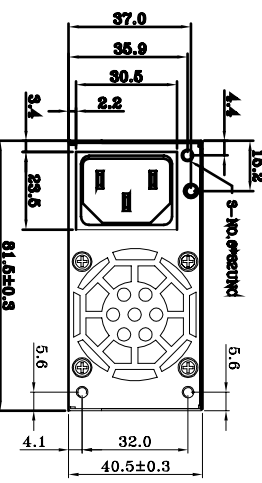
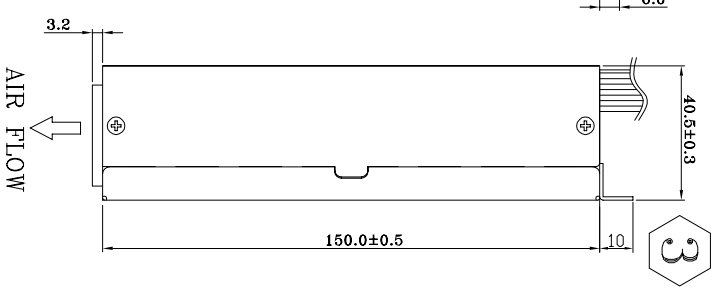
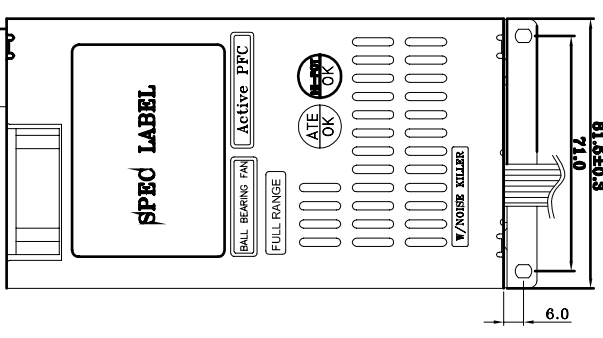
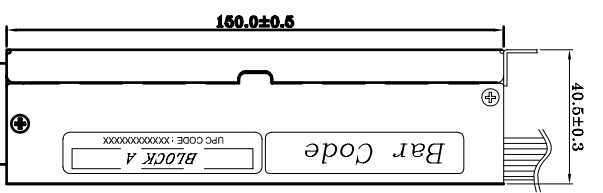
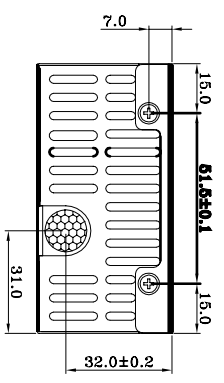
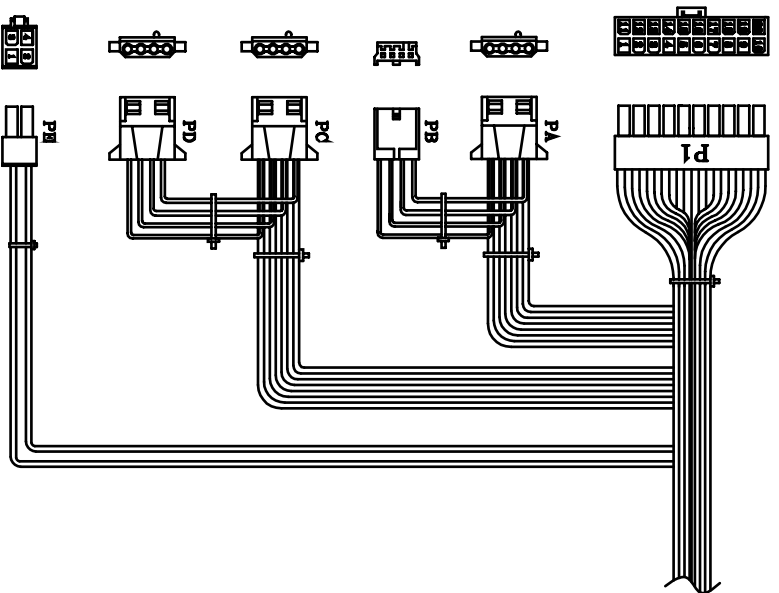
Specification

- **Temperature Range:** Operating: 0°C ~ +25°C on full load; storage & shipping: -20°C ~ +80°C
- **Humidity:** 5 ~ 95% on operating and storage
- **Dielectric Withstand:** Input to frame ground 1800 VAC for 2 second
- **Efficiency:** 68% at minimum measured at nominal AC main voltage and frequency with maximum load on all outputs
- **Rise time:** Less than 20ms
- **Hold-up Time:** 17ms minimum at nominal input voltage
- **Power Good Signal:** Power on delay time 100 ~ 500ms, off delay 1ms minimum (TTL and CMOS compatible)
- **Leakage Current:** Not exceed 3.5mA at 264Vac, 50Hz
- **MTBF:** 100,000 hours on maximum load at +25°C
- **Dimensions (LxWxH):** 150x81.5x40.5mm/6x3.2x1.6in

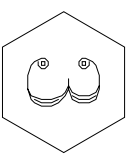
Sparkle Power Inc.
Main Office
 1000 Rock Avenue
 San Jose, CA 95131
 TEL: 408-519-8888
 FAX: 408-519-9999
 E-MAIL: info@sparklepower.com

Sparkle Power Inc.
Los Angeles Office
 17071 Green Drive
 City of Industry, CA 91745
 TEL: 626-839-7180
 FAX: 626-839-3395

Sparkle Power Inc.
Colorado Office
 1316 Indian Paintbrush Lane
 Longmont, CO 80503
 TEL: 303-776-3281
 FAX: 303-776-7645



尺寸修正



REF. D.	REF. NO.	SIGNAL	WIRE COLOR	GAUGE	CONNECTOR TYPE	LENGTH			
P1	1	+3.3V	ORANGE	18	MOLEX 200±15 39-01- 2200 or EQUIV.				
	2	+3.3V	ORANGE	18					
	3	COM	BLACK	18					
	4	+5V	RED	18					
	5	COM	BLACK	18					
	6	+5V	RED	18					
	7	COM	BLACK	18					
	8	PW-OK	GRAY	22					
	9	+5Vsb	PURPLE	18					
	10	+12V	YELLOW	18					
PA	1	+12V	YELLOW	18	AMP 250±15 1-480424-0 or EQUIV.				
	2	COM	BLACK	18					
	3	COM	BLACK	18					
	4	+5V	RED	18					
	PC	1	+12V	YELLOW			18	AMP 310±10 1-480424-0 or EQUIV.	
		2	COM	BLACK			18		
		3	COM	BLACK			18		
		4	+5V	RED			18		
	PB	1	+12V	YELLOW			22	AMP 150±10 171822-4 or EQUIV.	
		2	COM	BLACK			22		
3		COM	BLACK	22					
4		+5V	RED	22					
PD	1	+12V	YELLOW	18	AMP 150±10 1-480424-0 or EQUIV.				
	2	COM	BLACK	18					
	3	COM	BLACK	18					
	4	+5V	RED	18					
PE	1	COM	BLACK	20	MOLEX 310±10 39-01- 2040 or EQUIV.				
	2	COM	BLACK	20					
	3	+12V	YELLOW	20					
	4	+12V	YELLOW	20					

FSP P/N.:9PA2004224
 SPI P/N.:FSP200-50PLAR